



Annie Clavel <annie.clavel@gmail.com>

Women Painters West: November 2017 Newsletter

Annie <news@womenpainterswest.org>
Reply-To: Annie <news@womenpainterswest.org>
To: Annie.clavel@gmail.com

Wed, Oct 25, 2017 at 7:12 PM



November 2017

[View this email in your browser](#)

Calendar

MEETINGS

Thursday, November 9

Board meets at 10:00 am – 11:30 am

Monthly Artist Networking Lunch and Speaker:

11:30 am - 2:00 pm.

Speaker: Ann Lofquist (See details below.)

The 4 x 4 x 1.5 canvases will be for sale for \$3 at the November meeting
Olympic Collection, [11301 W Olympic Blvd, Los Angeles, CA 90064](#)

Cost: Buffet \$26. Parking \$6.

RSVP to Joan Baral at lunch@womenpainterswest.org by November 3

All WPW members (including Permanent list) must reserve for each luncheon.

Thursday, December 14

December Holiday Party

Olympic Collection, [11301 W Olympic Blvd, Los Angeles, CA 90064](#)

White Elephant, Canvas exchange, and networking

WOMEN PAINTERS WEST EXHIBITIONS

Chaffey Community Museum of Art

Exhibition: "Unintended Consequences – Embrace the Unexpected"

September 28 through November 4, 2017

217 S Lemon Avenue, Ontario, CA 91716

Open Thursdays through Sundays Noon to 4 pm

At the present we have our artists' work on display at the Chaffey Community Museum of Art through November 4, 2017.

Ebell of Los Angeles

Exhibition: "Back to the Ebell - WPW Winter Exhibit"

January of 2018 Women Painters West will exhibit at the Ebell of Los Angeles located in the Mid-Wilshire. Get the Prospectus by [clicking here](#).

Policy Clarification for Monthly Lunch Meetings

PLEASE NOTE!

All WPW members, including those on the Permanent list must reserve for each lunch meeting.

The RSVP deadline is the Friday before the luncheon.

If you cancel after that day, WPW must still pay for lunch, so we request that you reimburse WPW by sending a check for \$26.00. The Lunch manager will only confirm cancellations.

[Click here to RSVP for the November Lunch Meeting](#)

Please mail no show checks to WPW treasurer:
Susan Price, [1527 Yale Street Apt.#5, Santa Monica, CA 90404](#).

President's Message



We are in the midst of The Getty Foundation's Pacific Standard Time: LA/LA initiative, hosted by arts institutions across Southern California exploring Latino and Latin American Art in dialogue with the City of Los Angeles. Brazilian artist Anna Maria Maiolino at MOCA Grand "brings together expressive woodblock prints, visceral cement sculptures, politically-charged films and performances, fluid drawings, and monumental installations of unfired clay". Another Promised Land: Anita Brenner's Mexico at the Skirball "offers a new perspective on the art and visual culture of Mexico and its relationship to the United States as seen through the life and work of the Mexican-born, American Jewish writer".

Radical Women: Latin American Art, 1960–1985 at the Hammer Museum "reappraises the contribution of Latin American women artists and those of Latino and Chicano heritage in the United States to contemporary art."

Do you see a trend here? Women Artists are definitely highly represented on the Artscene and with Pacific Standard Time in particular.

Women Painters West's current exhibit (on through November 4), "Unintended Consequences: Embrace the Unexpected" celebrated the countdown towards our 100th year with a reception and awards at the Chaffey Community Museum of Art on October 8.

Early January 2018 our next exhibit will be at the landmark venue the Ebell of Los Angeles, located in the Mid-Wilshire section of Los Angeles. It includes a clubhouse building (where we will exhibit) and the renowned 1,270-seat Wilshire Ebell Theatre, [743 S. Lucerne Boulevard](#). Learn more about this architecturally renowned venue [<click here>](#).

It turns out that Women Painters of the West held their silver (25th) anniversary gala at The Ebell in 1946, so it is fitting we exhibit there.

To keep up our momentum, we continue seeking more great venues in the local and greater Los Angeles area to literally put Women Painters West on the map.

This is your group. Please help out where you can:

- **Brenda Anderson, Historian**, needs help taking pictures at meetings and exhibits and tours.
- A **Publicity Chair** (this is a board position) is needed to provide info of our activity to media, keep track of ads and email blasts with Artscene magazine.
- A **Volunteer Coordinator** needed to assist the volunteers chair.
- **Diane Karpel** is asking for participation in "Gabby Groups" city and valley so we can get those up and running.
- At our **November meeting** we will begin collecting White Elephant items and have small canvases available for our holiday party art exchange in December.

Help is needed for all the above. Sign up sheets will circulate at lunch so PLEASE sign up and participate where possible.

Looking forward to seeing you at our upcoming meeting,

Susan Gesundheit
susangesundheit@aol.com

November Meeting

Featured Speaker

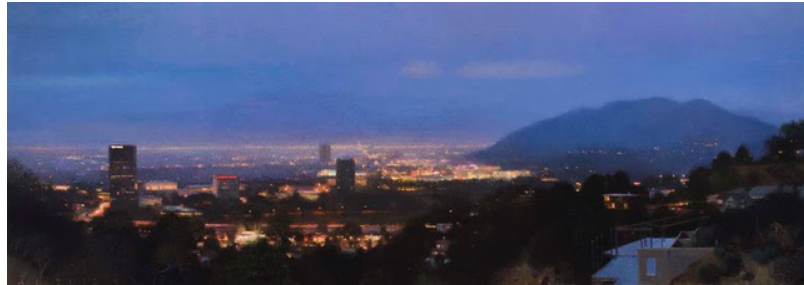
Ann Lofquist

by Lorraine Bubar, Program Chair

Come to the WPW Meeting and Lunch on November 9.



Our November speaker will be landscape painter, Ann Lofquist, who recently had a show at Craig Krull Gallery in Bergamot Station. When she moved to California from the East Coast, she started to paint the urban sprawl of Southern California, capturing the combination of light, space, and form. Her delightful exhibit of California landscapes were divided between views of distant urban views along the southern California coast and of pastoral areas between the Santa Ynez Valley and Paso Robles in the California interior. She finds the balance between working outdoors and in her studio to create her large, luminous paintings.

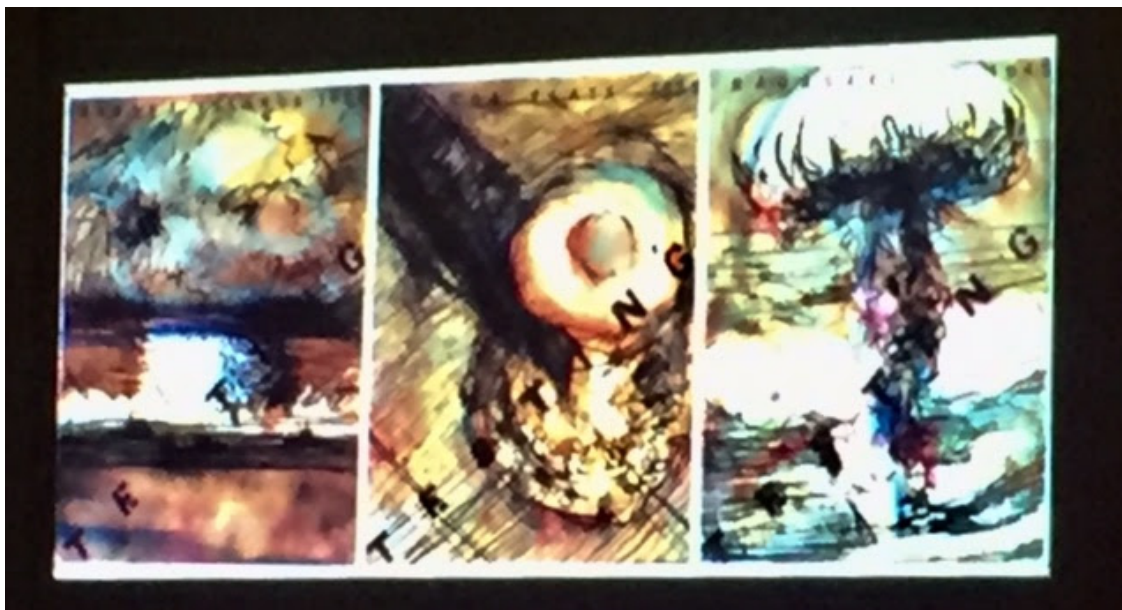


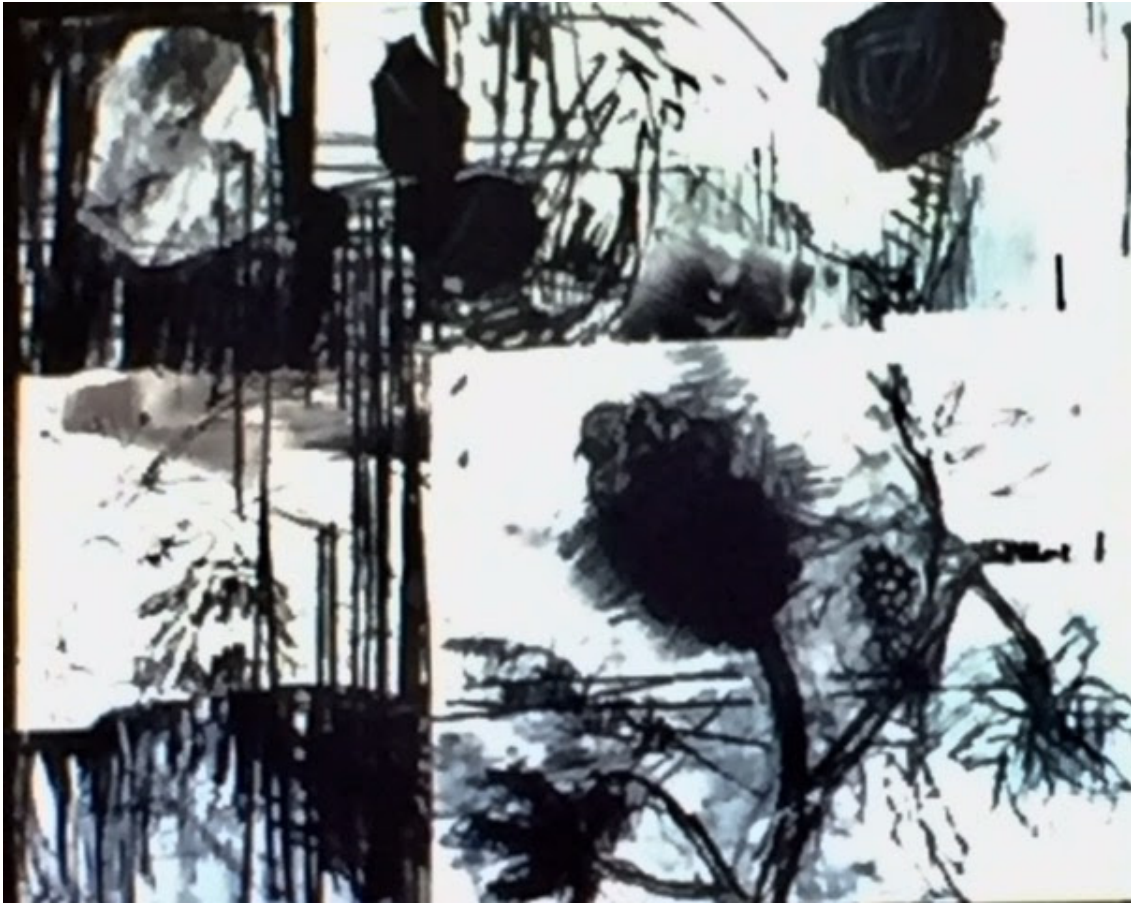
Report from the October Meeting

These pictures were taken of our speaker and her fine art, Marie Thibeault, which was an inspiring success at our October Luncheon. She is a painter of large scale pieces with fragmented industrial imagery

and is currently a Professor of Art at the California State University Long Beach where she teaches painting and color theory. The themes of her paintings shown here relate to environmental changes such as the destruction by Hurricane Katrina.

Her interpretations were excellent examples of an artist's perception.





At the Chaffey Exhibition

by Ellen Levine, Exhibitions Program

On October 8, the Chaffey Community Museum of Art hosted a welcoming reception for the Women Painters West show - "Unintended Consequences - Embrace the Unexpected". Juror Steven Thomas expressed the challenge to narrow the more than one hundred entries down to the fifty presented in the show, and to choose the six winners listed below:



Award winners with Juror Steven Thomas (Selina Cheng missing from photo)

Award Winners:

First Place: Selina Cheng - "Day's End"

Second Place: Karen Hansen - "After Burn"

Third Place: Jan Wright - "Ghosts of Cedars Past"

Honorable Mention: Shula Arbel - "An Unstill Life #2"

Honorable Mention: Suzanne Edmonson - "Temptation"

Honorable Mention: Judy Heimlich - "Hidden Forrest"

Thank you to all the artists who entered and to all the volunteers that helped make this exhibition happen.

Pictures from the Exhibition and Reception



Condolences

The members of Women Painters West extend our heartfelt condolences to our member, Diane Dubin, whose husband, Mike, recently passed away.

Members' News

Members' News should be sent by the 10th of the month to Nancy Lawrence @ tearmyartout@mac.com

Susan Gesundheit will have an Artist's Walkthrough for her exhibit with Dafna Gilboa in the Encino Terrace Center Lobby Art Gallery, [15821 Ventura Blvd.](#), on Nov. 8 from 11:30 am to 1:00 pm. RSVP to susangesundheit@aol.com

Come see and experience an **art opening at the Ebell of Los Angeles on November 1**. The art reception is from 5:30 to 8:00 pm. Everyone is welcome. You can see the space where our next Women Painters West exhibition will take place. The Ebell of Los Angeles is located at [743 S. Lucerne Boulevard](#) (on Wilshire Blvd. between Highland and Western).



Show your pride and market our website!

GET YOURS AT THE NEXT LUNCHEON!

Custom Frame \$12.00 for 2, check or cash.

WPW on Facebook

If you have news about your art (shows, workshops, art classes) that you want to pass, please, post them on WPW Facebook page. [HERE](#)

Annie Clavel

WPW Directory has been updated. Below is the link to the directory [HERE](#).

If you want a pdf file to print, please, send an email to Annie Clavel: annie.clavel@gmail.com



Copyright © 2016 Women Painters West, All rights reserved.

You are receiving this email because you are a member of Women Painters West.